

How to find the borders of an ESFF-reference?

Case example ESFF-0077 Kauksi

- 1) Go to wwf.co -> Directory -> WWFF Directory, choose ESFF and click ESFF-0077: now you can see details like coordinates and Maidenhead locator.
- 2) From directory click question mark next to name of the site:

| Reference Name (ESFF-0077) | | |
|-------------------------------------|----------------|-----------|
| <input type="text" value="Kauksi"/> | | |
| Status: | Valid from/to: | IUCN Cat: |

- 3)
- 4) This opens the correct Protectedplanet.net page for this reference:

Kauksi in Estonia

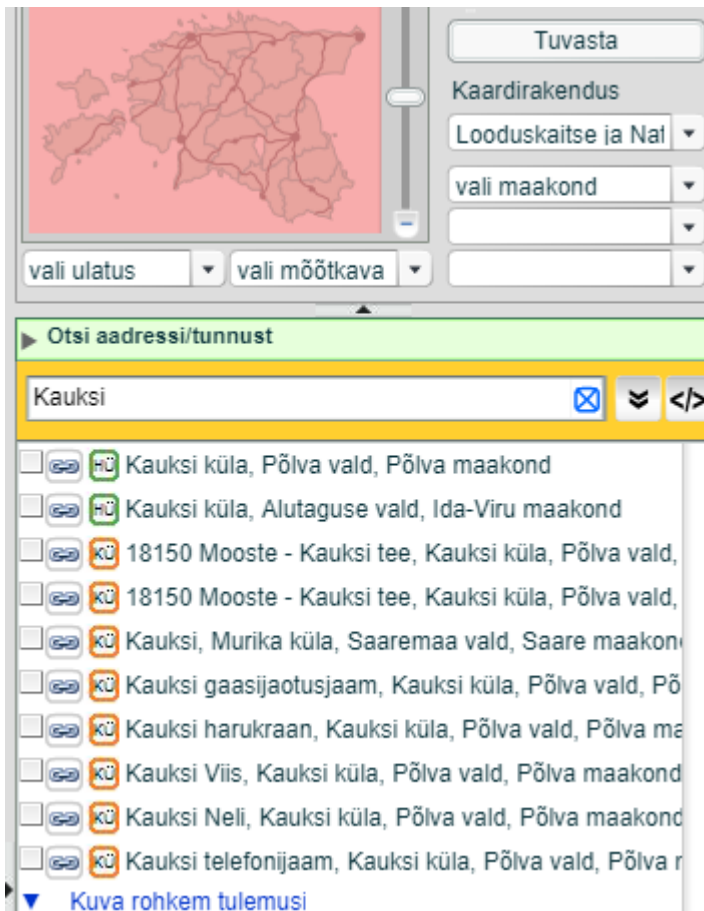
[Download site GIS file](#) [Download site](#)



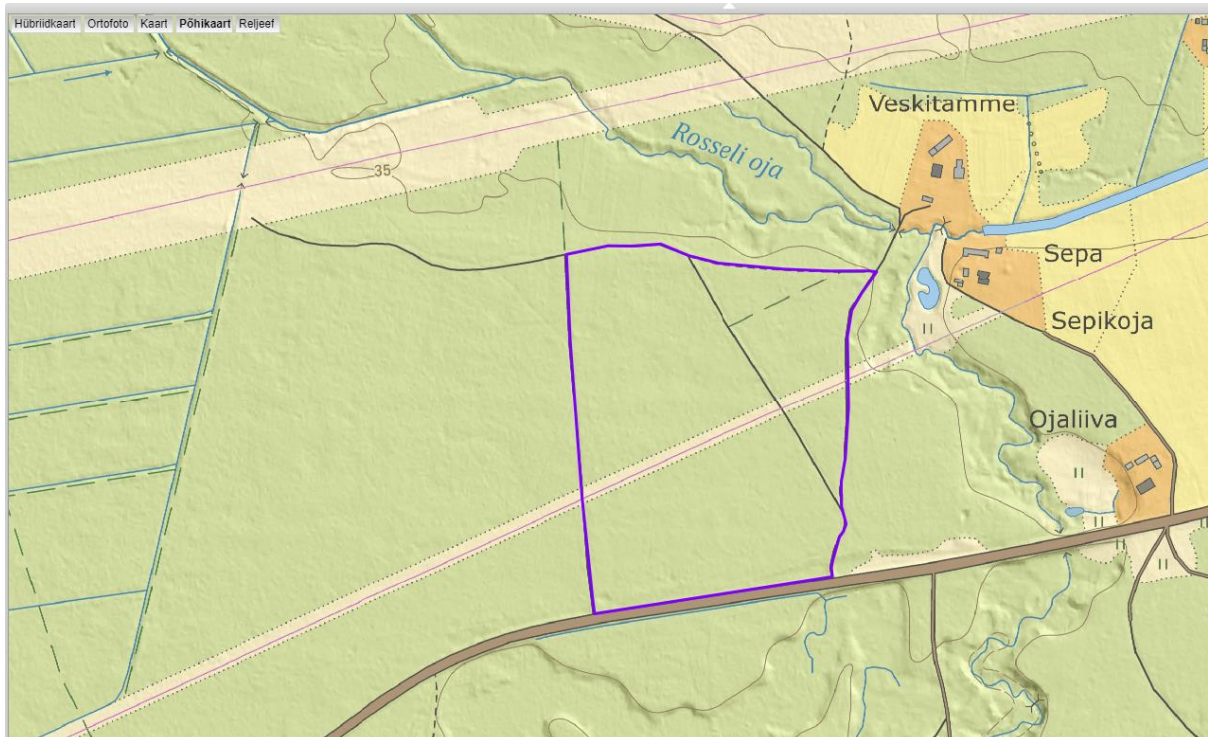
This map could be enough to locate the borders of the reference. Especially when your station is in the middle of it

- 5) To get better map go to: <https://geoportaal.maaamet.ee/est/Kaardiserver/Looduskaitse-Natura-2000-p92.html>

Check that “Looduskaitse ja Natura 2000” is selected from menu up right. You also need Adobe Flash Player to be on. Now check from the map the address of this site - in this case Kauksi. Type the village to “Otsi aadressi/tunnust” box. Be careful - there are two of them and you want the one in Ida-Viru!



6) "Kauksi küla, Alutaguse vald" opens new map. Now you need to find the correct site (they are with coloured borders - compare them to Protected Planet map). Find where are you and zoom, now you have a map! (This is how it looks when you select "Põhikaart" from upper left):



7) You can also get help from Natura 2000 maps (some references don't have their borders in Estonian map):

<http://natura2000.eea.europa.eu/>

<http://maps.eea.europa.eu/EEABasicViewer/v3/index.html?appid=07661dc8a5bc446fafcfe918c91a1b1b&displaylegend=true&embed=true>

8) If possible - take a photo of your GPS tracking when you are inside the reference at the station or take a screenshot from your mobile phone's map application (indicating your position). (Apps like Regio Road Atlas, Google Maps or similar)